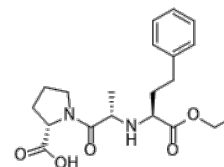


**Product Name** : Enalapril  
**Cat. No.** : PC-27012  
**CAS No.** : 75847-73-3  
**Molecular Formula** : C<sub>20</sub>H<sub>28</sub>N<sub>2</sub>O<sub>5</sub>  
**Molecular Weight** : 376.45  
**Target** : Angiotensin-converting Enzyme (ACE)  
**Solubility** : 10 mM in DMSO



## Biological Activity

Enalapril (MK-421) is the prodrug of Enalaprilat (MK-422 anhydrous), a potent, competitive and long-acting angiotensin-converting enzyme (ACE) inhibitor with IC<sub>50</sub> of 1.94 nM.

## References

- Eickels M, et, al. Br J Pharmacol. 2000 Dec;131(8):1592-6.  
Ceconi C, et, al. Eur J Pharmacol. 2007 Dec 22;577(1-3):1-6.

**Caution: Product has not been fully validated for medical applications. Lab Use Only!**

E-mail: tech@probechem.com